

W&H PEACOCK
AUCTIONEERS & VALUERS

Mid Century Design

Bedford Auction Centre
Friday 20th February | Commencing at 10am

**Please note: all future Mid Century sales will
now start at 10am instead of 10:30am**

Viewing: Friday 13th February 9am to 8pm
Saturday 14th February 9am to 5pm
Thursday 19th February 9am to 5pm
and morning of Sale from 9am
www.peacockauction.co.uk

1 After Poul Henningsen (1894-1967), a reproduction 'Artichoke' style ceiling light in a brushed copper finish, h. 55 cm

Est £300 - £400

2 After Poul Henningsen (1894-1967), a reproduction 'Artichoke' style ceiling light in a brushed copper finish, h. 55 cm

Est £300 - £400



3 A French etagere or set of shelves by Pierre Vandel with four graduated glass shelves on a metalwork frame, badge to the frame, 99 x 39 x 102 cm

Est £200 - £300

4 Harry Bertoia (American, 1915-1978) for Knoll, a set of 1960's chairs including one 'Diamond' and three side chairs, two with Knoll seat pads *SFP

Est £200 - £400



5 A pair of 1950/60's bamboo basket chairs on black metalwork frames in the manner of Roberto Mango (2)

Est £150 - £200

6 A pair of 1950/60's bamboo basket chairs on black metalwork frames in the manner of Roberto Mango (2)

Est £150 - £200

7 A pair of 1960/70's French adjustable low lounge chairs with red and black contrasting upholstery and adjustable seats on beech frames *SFP

Est £80 - £120

8 A late 20th century low swivel chair with black upholstered seat on a chromed four-star base *SFP

Est £50 - £80



9



9

John Tabraham (South African) for Kallenbach, a large teak plank coffee table or bench, badge to the underside, 183 x 69 cm

Est £200 - £300

10

A 1960/70's teak low coffee table on rectangular slab legs joined by stretchers, 51 x 59 x 26 cm

Est £50 - £80

11

A pair of American lounge armchairs with teak wrap-around frames and beige/grey upholstered seats and backs, by Stow & Davis of Grand Rapids, badges to the frames *SFP

Est £400 - £600

12

A pair of 21st century Norman Foster style office chairs, the black vinyl seats on cantilever frames *SFP

Est £30 - £50

13

Charles Pollock for Knoll, a pair of executive chairs, the button upholstered fabric seats on four-star swivel bases with castors *SFP

Est £80 - £120

11



14

Robert Heal for Staples of Cricklewood, a teak modular 'Ladderax' shelving system including two black metal uprights, h. 200 cm, four black metal uprights, h. 163 cm, two fall front bureaux, w. 60 cm, an open faced cabinet, w. 60 cm, a single drawer desk, w. 90 cm, four corner shelves with the corner upright, eleven various shelves and the associated cross-members (Qty)

Est £400 - £600

15

A pair of Art Deco style armchairs attributed to Casa Padrino *SFP

Est £250 - £350



16

A pair of Art Deco style quarter-sawn walnut side tables, the circular surface on four supports and a platform base, di. 60 cm

Est £150 - £200

17

An Art Deco style sideboard, the central bank with three drawers on a platform base, w. 124 cm, h. 90 cm

Est £80 - £120

18



18

A 1980's ceiling light with a simulated timber shade, di. 33 cm

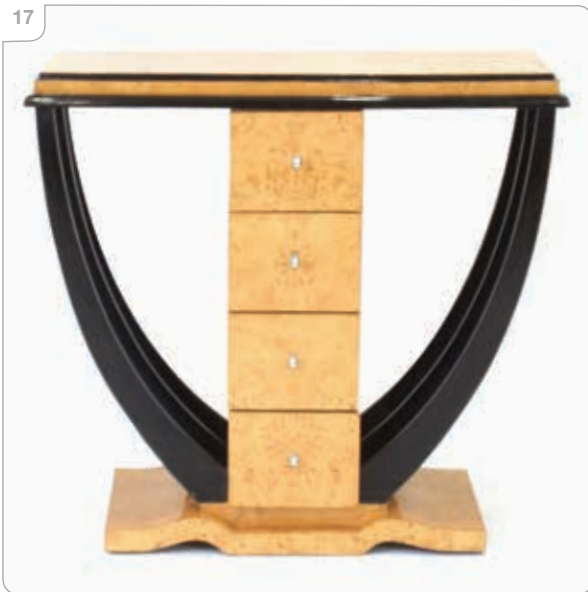
Est £30 - £50

19

A 1980's white perspex ceiling light of squat form, di. 39 cm

Est £40 - £60

17



20



20

A 'Galaxy' by Crestworth Limited fibre-optic table lamp of spherical form, on a perspex stand

Est £100 - £200

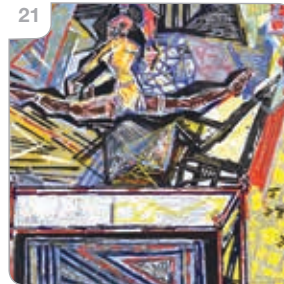


21

Ben Mosley (b. 1981), 'A Study of a Gymnast', signed verso, oil on canvas, image 99 x 99 cm *Ben Mosley is a British expressionist artist who is the official artist for Team GB and Artist in Residence at Wembley Stadium.

Est £400 - £600

21



22

Titta Fasciotti (Italian/ South African, b.1927), A seascape with crashing waves, signed and dated '74, oil on board, image 50 x 75 cm

Est £200 - £300



illustrated: lot 23, 33

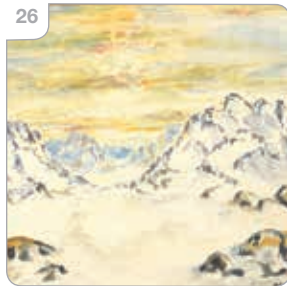
- 23** Lorraine Abraham
R.S.M.A. (1941-2023),
Study of a mime artist
at rest, signed, oil on
canvas, image
100 x 40 cm
Est £60 - £80



- 24** After Charles Kiffer-Porte
(French, 1902-1992),
'Maggy Sarragne',
Lithographie Originale -
Reproduction Interdite',
image 67 x 56 cm
Est £100 - £150

- 25** Renato... A girl studying
her nails amongst
flowers, signed and
dated 1965, screenprint,
image 78 x 34 cm
Est £30 - £50

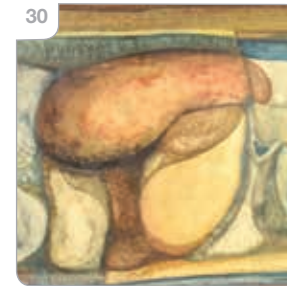
- 27** John Bampffield (b.1947),
Redcoats marching past
the remains of a gun
carriage, signed, oil on
canvas, 72 x 90 cm
Est £80 - £120



- 26** Alibak Johansen
(Greenland, 1921-2007),
A snowy landscape,
signed and dated '63,
oil on canvas, image
61 x 78 cm
Est £40 - £60



27

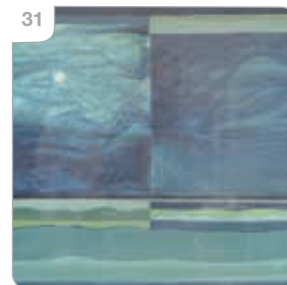


- 30** Werner Tillmanns
(1925-1999), A still life
study, initialled, oil on
canvas, image
80 x 100 cm
Est £80 - £120



30

- 28** N...Williams (1960's),
Birds seated on a tree,
indistinctly signed and
dated 1962, screenprint,
image 41 x 52 cm
Est £40 - £60



31

- 29** Marie Whitby
(1932-2015), Carriages
in a street, initialled,
mixed media relief, image
46 x 100 cm, together
with two figural groups
by the same artist (3)
Est £50 - £80

- 31** Werner Tillmanns
(1925-1999), A
seascape, initialled, oil on
canvas, image
49 x 59 cm
Est £40 - £60

- 33** Charles Eames
(American, 1907-1978)
& Ray Eames (American,
1912-1988) for Vitra, a
set of six 'Eames Plastic
Chair' DSW side chairs
with egg-shell blue shells,
labelled and dated 2015
(6)
Est £300 - £400

- 32** Charles Eames
(American, 1907-1978)
& Ray Eames (American,
1912-1988) for Vitra, a
set of thirteen 'Eames
Plastic Chair' DSW side
chairs with grey shells,
labelled and dated 2016
(13)
Est £400 - £600

- 34
Richard Young for Merrow Associates, a 1960's Model 341C coffee table, di. 91 cm
Est £40 - £60
- 35
After Charles Eames (American, 1907-1978) & Ray Eames (American, 1912-1988), a 'Soft Pad' or 'Softpad' office armchair with black leather upholstery on a five-star swivel base, manufactured by ICF *SFP
Est £200 - £300

- 36
An 'EA 116' Aluminium Group armchair designed by Charles Eames (American, 1907-1978) & Ray Eames (American, 1912-1988), the black leather seat with overpainted arms, on a four-star swivel base, in the manner of Herman Miller but unsigned
Est £100 - £150
- 37
Matteo Thun (Italian, b. 1952) for Artemide, a 'Choose' standard/ floor lamp with tiltable red diffuser, h. 140 cm
Est £70 - £100

- 38
Matteo Thun (Italian, b. 1952) for Artemide, a 'Choose' desk lamp with tiltable red diffuser, h. 57 cm
Est £40 - £60



- 39
Matteo Thun (Italian, b. 1952) for Artemide, a 'Choose' desk lamp with tiltable red diffuser, h. 57 cm
Est £40 - £60
- 40
Matteo Thun (Italian, b. 1952) for Artemide, a 'Choose' desk lamp with tiltable cream diffuser, h. 57 cm
Est £40 - £60
- 41
Matteo Thun (Italian, b. 1952) for Artemide, a 'Choose' desk lamp with tiltable cream diffuser, h. 57 cm
Est £40 - £60

- 42
Matteo Thun (Italian, b. 1952) for Artemide, a 'Choose' desk lamp with tiltable cream diffuser, h. 57 cm
Est £40 - £60
- 43
Charles Eames (American, 1907-1978) & Eero Saarinen (Finnish-American, 1910-1961) for Vitra, a set of four 'Organic' highback reading chairs upholstered in green, labels to bases (4) *SFP
Est £200 - £300
- 44
A 1960's Swedish teak and crossbanded rectangular occasional table on square straight legs, stamped Alberts Tibro, 120 x 66 x 45 cm
Est £80 - £120



- 45
Arne Wahl Iversen (Danish, 1927-2016) for Vinde Mobelfabrik, a Model 70 teak bureau or secretaire, the superstructure with two drawers and slide over two long drawers, maker's stamps to the base, 95 x 43 x 84 cm
Est £400 - £600
- 46
A Stokee 'Varier Peel' chair and stool upholstered in purple *SFP
Est £150 - £200



47

A pair of Model E1027 chrome and glass side tables designed by Eileen Gray (1878-1976), di. 50 cm

Est £120 - £150

48

Joe Colombo (Italian, 1930-1971), a 'Bobby' trolley in brown with moulded signature to the bottom layer, 43 x 41 x 74 cm

Est £40 - £60

49

Eero Aarnio (Finnish, b. 1932) for Magis, a 'Me Too' Collection 'Puppy' in pink/orange, h. 80 cm, w. 102 cm, together with another in green (2)

Est £100 - £200



50

Arne Jacobsen (Danish, 1902-1971) for Republic of Fritz Hansen, an 'Oxford' highback swivel armchair upholstered in cream leather on a four-star base, labelled and dated 2007 *SFP

Est £150 - £200

50



52

A table lamp, the shade constructed from Italian Fornasetti 'Soli e Lune' fabric, h. 47 cm

Est £60 - £100

54



51

A cylindrical floor lamp constructed from Italian Fornasetti 'Libreria' fabric, h. 75 cm

Est £80 - £120

53

After Piero Fornasetti (Italian, 1913-1988), a table inset with a section of Cole & Son 'Fornasetti Collection' paper, di. 32 cm, h. 46 cm

Est £60 - £80

54

Piero Fornasetti (Italian, 1913-1988), a late 20th century 'Bastoni' pattern fabric panel, 41 x 92 cm, mounted to a frame

Est £40 - £60





56

56

John Piper CH (1903-1992), Northern Cathedral, circa 1962, screen printed cotton satin for Sandersons, image 46 x 52 cm, mounted to a frame

Est £50 - £80

57

John Piper (1903-1992), 'Stones of Bath', circa 1962, screen printed cotton satin for Sandersons, 51 x 122 cm, mounted to a frame

Est £100 - £150

57



58 A 1970's fabric textile screen print depicting transport, entitled 'Voyageur', 51 x 122 cm, mounted to a frame

Est £50 - £70

58



59 Peter Hall for Heals, Rosetti, screen printed fabric panel, circa 1974, image 61 x 123 cm, mounted to a frame

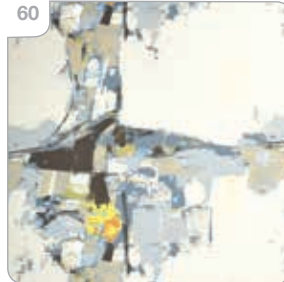
Est £80 - £120

60

Donald Hamilton Fraser (1929-2009) for David Whitehead Ltd., Cyclades, screen printed fabric, circa 1960, 71 x 122 cm, mounted to a frame

Est £80 - £120

60



61

Nicola Wood for Heals, Vibration, screen printed on cotton, circa 1962, image 31 x 91 cm, mounted to a frame

Est £40 - £60



62

A 1960's fabric panel screen printed in the 'Hong-Kong' pattern, image 61 x 122 cm, mounted to a frame

Est £60 - £100

63

A Westclox 'Big Ben Repeater' mantel clock together with another 'Space Age' clock by Salvest (2)

Est £30 - £40

64

Daniel David Moli a.k.a. Boogie Moli (b. 1995), 'Peek', signed from an edition of 150, image 76 x 69 cm, together with 'Kong' (2)

Est £200 - £300

65

Lowell Nesbitt (American, 1933-1993), 'Yellow Tulip', lithographic exhibition poster, 91 x 60 cm

Est £40 - £60

66



66

Tony Hart (1925-2009), A dog in a racing car, inscribed 'To Don, Good Wishes, Tony Hart', pen and ink, 42 x 60 cm, together with another similar drawing by Hart (2)

Est £200 - £300

67

After Roberto Matta (1911-2002), folio of lithographs for Alexandre Iolas, eleven lithographs, cover page and back page, contained in a folder, numbered 71, dated 1975, unsigned

Est £100 - £150

70

Two Pirelli calendars for 1988 and 1989 together with another similar calendar (3)

Est £40 - £60

71

Charles Eames (American, 1907-1978) & Ray Eames (American, 1912-1988) for Evans Products Co., a pair of early moulded plywood DCW (dining chair wood) chairs (2)

Est £1000 - £1200

68



68

Frederic Belaubre (French, b. 1958), A seated lady, covering herself with a robe, unsigned, attribution verso, oils, image 27.5 x 19 cm

Est £40 - £60

69

Hayden B... (follower of Roy Lichtenstein), 'You've got to let him know', signed, image 28 x 23 cm

Est £30 - £50

72



72

A set of four Ercol Model 401 'Butterfly' chairs in elm and beech

Est £800 - £1200

73

Kai Lyngfeldt-Larsen for Søren Willadsen, a set of eight 1960's Danish rosewood dining chairs, including two carvers, upholstered in black leather, manufacturer's labels to frames "SFP" *CITES Article 10 Transaction Specific Ref: 621926/01

Est £1500 - £2000

74



74

A set of three Arkana Model 116 tub chairs with loose charcoal pads on four-star bases, together with a 'tulip' style bistro table, di. 106 cm

Est £300 - £400





75 A 1960's Danish rosewood Model 75 freestanding desk by Omann Jun, the crossbanded rectangular surface over two 'floating' three-drawer pedestals, the reverse with a fall-front cabinet and two open bookcases, on cushioned legs joined by cross-stretchers, 153 x 81 x 73 cm *CITES Article 10 Transaction Specific Ref: 26GBA10G9OKP9

Est £1000 - £1500



76 A 1960's Danish rosewood and crossbanded desk, the cushioned rectangular surface over two three-drawer pedestals with integral handles, the reverse with a single shelf and gallery, on later tapering legs, 135 x 72 x 73 cm *CITES Article 10 Transaction Specific Ref: 26GBA10YDYNLW

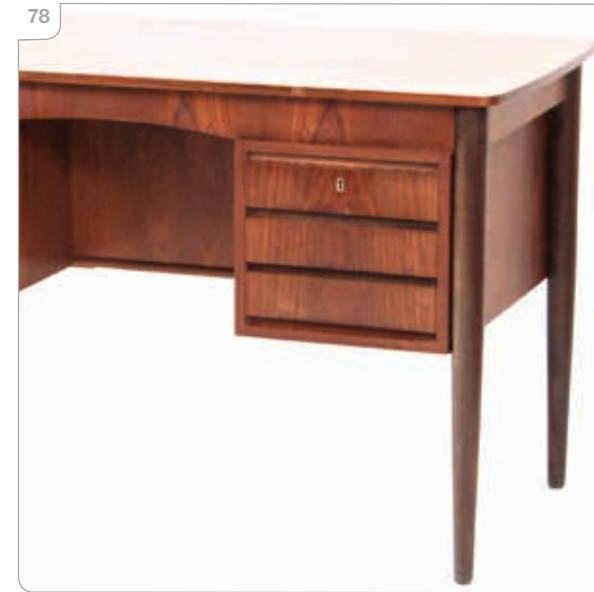
Est £400 - £600

77 A 1950/60's desk, the teak crossbanded surface over an oak base incorporating a slide, tambour cupboard and drawers, on slab feet, 152 x 77 x 72 cm

Est £250 - £300

78 A 1960's Danish teak desk, the cushioned surface over two pedestals with six drawers, the reverse with three open compartments, on circular tapering legs, 128 x 64 x 75 cm

Est £250 - £300



79 A 1960's Danish teak and crossbanded occasional table, the rectangular surface on slanted legs joined by a cross-stretcher, 165 x 70 x 55 cm

Est £150 - £200

80 A 1970/80's teak trolley or dry bar, the smoked glass surface over a drop-down compartment to the rear and an open tray compartment to the front, on castors, 84 x 45 x 74 cm

Est £80 - £120



81 Jose Antonio Puertas Lopez, a 1994 limited edition sculpture modelled as a stylised bull, 21 cm, h. 11 cm

Est £60 - £80



- 82 Bernard Rooke (b.1938), a studio pottery vase of Brutalist circular form, h. 34 cm

Est £60 - £100

- 83 A pair of Art Deco style crackle glazed bookends in the manner of Louis Fontinelle modelled as skiers, signed E. Hadji, h. 23 cm

Est £100 - £150

- 84 Dario Tognon (Italian, 1936-2008) for Artemide, a 'Dania' white enamelled table lamp, h. 41 cm

Est £500 - £700



- 85 A set of six Swedish teak plates by ARY Nybro, stamped, di. 27 cm

Est £60 - £80



- 86 Franco Bastianelli (Italian) for Cellini, a Brutalist enamelled clock, signed verso, di. 30 cm

Est £80 - £120



- 87 An Italian dish by Bitossi modelled as a fish, ink marks to the base 'P0129/48', 47 x 10 cm

Est £40 - £60

- 88 A group of Alessi products including a three-piece tea service, a 'Juicy Salif' citrus squeezer by Philippe Starck, a bottle opener, two glass containers and a 'Magic Bunny' toothpick holder (8)

Est £100 - £200

- 89 Tracey Emin (b.1963), 'Foundlings and Fledglings Our Angels of This Earth', white china teapot with silkscreen print, 2007, h. 16 cm, with the Counter Editions certificate numbered 968/1,000

Est £250 - £300



- 90 'Richard Long: Walking in Circles', The South Bank Centre 1991 sealed book, together with four booklets of screenprints and a bottle of Beck's Bier decorated with Long's artwork (6)

Est £30 - £50

91



91 Hans J Wegner (Danish, 1914-2007) for Carl Hansen & Son, a set of four CH36 chairs with oak frames and seagrass seats, manufacturer's labels to the frames, serial numbers include 683312

Est £800 - £1200

92

Niels Koefoed for Koefoeds Hornslet, a set of six 'Lis' carvers in teak with upholstered seats, manufacturer's stamps to the frames *SFP

Est £800 - £1200



93



93

In the manner of Harvey Guzzini, a 1970's floor lamp with a semi-spherical smoked perspex shade on a chromed shaft

Est £100 - £200

94

A 1960/70's teak room divider with two glazed sliding doors, on turned legs, w. 121 cm, h. 168 cm

Est £150 - £200

95

A 1970's teak what-not with three tiers and brass finished spindle supports to the rear, on square feet, w. 120 cm, h. 82 cm

Est £50 - £80

96

Jason John "JJ" Adams (b. 1978), 'Audrey Hepburn (Colour)', signed and numbered 110/195, limited edition published by Wishbone Publishing Ltd, with coa, image 75 x 59 cm *Adams is a mixed media and digital 'British Pop and Lowbrow' artist.

Est £200 - £300

98

A Poole Lighting Ltd. arc style floor lamp, Model 7424

Est £60 - £80

99

Raul Barbieri and Giorgio Marianelli for Tronconi, an Italian 'Bikini' floor lamp or uplighter, labelled to the underside

Est £200 - £300

100



100

A Danish ceiling light, the amber glass shade with copper-coloured mounts

Est £30 - £50



- 101** Sir Terry Frost RA (b. 1915), 'Newlyn Blue Q', signed and numbered 25/125, screenprint, image 73 x 72 cm
Belgravia Gallery, St Ives, label verso
*Artist's Resale Rights at 4% will apply to this lot.
Est £1500 - £2000

- 102** Sir Terry Frost RA (b. 1915), 'Red, Black & White 1999', signed and numbered 19/50, colour etching, image 33 x 35 cm, Belgravia Gallery, St Ives, label verso
*Artist's Resale Rights at 4% may apply to this lot.
Est £600 - £1000



- 103** Sir Terry Frost RA (b. 1915), 'Red, Black & White with Cream', signed and numbered 6/100, screenprint, image 22 x 25 cm
*Artist's Resale Rights at 4% may apply to this lot.
Est £500 - £700



- 104** Peter Blake (b. 1932), 'Bobbie Rainbow', lithograph on tin, 2001, signed and numbered 1,438/2,000, 66 x 44 cm, Pallant House Gallery details verso
Est £200 - £300

- 105** Ilmari Tapiovaara (1914-1999) for Laukaan Puu, a pine dining table on black tapering legs, maker's stamps to the underside, 120 x 70 x 67 cm
Est £300 - £500

- 106** Anders Pehrson (Swedish, 1912-1982) for Atelje Lyktan, a pair of 1970's Swedish moulded brown desk lamps of tubular form, labelled (2)
Est £200 - £300

- 107** Stefano Giovannoni (Italian, b. 1954) for Magis, a set of three 'Bombo' stools (3)
Est £150 - £200

- 108** A 1970/80's black wicker chair on a swivel base
Est £100 - £150

- 109** After Charles Eames (American, 1907-1978) & Ray Eames (American, 1912-1988), an 'Aluminium Group' style bistro table, the white laminate surface on a four-star base, di. 112 cm
Est £50 - £70

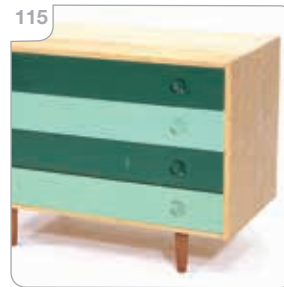
- 110** Robert Heal for Staples of Cricklewood, a teak modular 'Ladderax' shelving system including three teak uprights, h. 162 cm, three teak uprights, h. 86 cm, a fall-front cabinet, w. 90 cm, two sliding door cabinets (one glazed), w. 90 cm, three single-drawer units, w. 90 cm, three shelves, w. 90 cm, and the associated cross-members
Est £400 - £600



- 111** A 1970's Danish armchair, the bentwood frame supporting brown leather upholstery, on an associated four-star swivel base *SFP
- Est £150 - £200**

- 112** John Piper (1903-1992) for Terence Conran/Habitat, a 'Myer' coffee table with laminate surface and black metalwork frame, 113 x 37 x 36 cm
- Est £80 - £120**

- 114** A 1960's Richard Hornby teak two-tier coffee table, 91 x 41 x 35 cm
- Est £60 - £80**



- 113** A 1970's 'pietra dura' occasional table, the mosaic marble surface on ebonised tapering legs with brass caps, 81 x 41 x 49 cm
- Est £60 - £80**

- 115** A 1960's oak chest of four drawers painted in shades of green, on teak tapering legs, 100 x 49 x 73 cm
- Est £80 - £120**

- 116** A pair of 1950/60's Danish beech framed armchairs with blue check fabric upholstery *SFP
- Est £200 - £300**



- 117** A pair of 1960/70's Danish 'Safari' style chairs with loose suede cushions on beech frames *SFP
- Est £120 - £150**

- 120** An Ercol elm circular occasional table on beech tapering legs, di. 73 cm, h. 42 cm
- Est £80 - £120**



- 123** Gilbert Proesch and George Passmore (Gilbert & George), 'Corpsing Pictures' Series, signed, dated 2023, poster, image 59 x 82 cm
- Est £50 - £80**

- 118** A 1970's teak dining table, the rectangular surface on four circular tapering legs, 151 x 88 x 74 cm
- Est £40 - £60**

- 121** Lucienne Day (1917-2010) for Heals, Vanessa, screen printed fabric, circa 1960, image 59 x 49 cm
- Est £50 - £80**



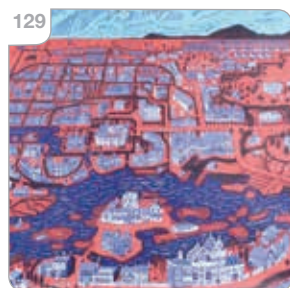
- 119** An Ercol elm rectangular table on beech tapering legs, 100 x 69 x 72 cm
- Est £100 - £150**

- 122** A 'Perpetua' pattern screen printed rayon taffeta panel, designed by Lucienne Day (1917-2010) for British Celanese Ltd., circa 1953, 46 x 122 cm
- Est £60 - £80**



124 Personality Posters of Can Ltd., Zodiac signs on a black 'backlit' ground, poster, image 84 x 58 cm
Est £50 - £80

127 Sir Grayson Perry CBE RA Hon FRIBA (b. 1960), 'Playing the Gallery' series, circa 2014, image 46 x 32 cm
Est £40 - £60



129 Sir Grayson Perry CBE RA Hon FRIBA (b. 1960), 'Our Town', printed on polypropylene, image 39 x 59 cm
Est £50 - £80

125 Sir Grayson Perry CBE RA Hon FRIBA (b. 1960), 'Phillipa's Bike - Silver Cycle' fabric textile, from the Chesham Cabinet Collection, circa 2008, image 44 x 59 cm
Est £50 - £80



128 Sir Grayson Perry CBE RA Hon FRIBA (b. 1960), 'Red Alan Manifesto', digital print, c. 2014, image 29 x 29 cm
Est £40 - £60

126 Sir Grayson Perry CBE RA Hon FRIBA (b. 1960), 'Phillipa's Bike - Silver Cycle' fabric textile, from the Chesham Cabinet Collection, circa 2008, image 39 x 49 cm
Est £30 - £50

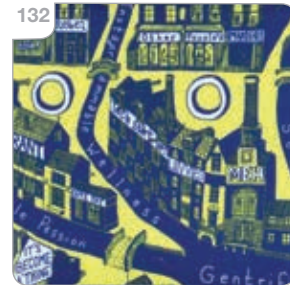
128 Sir Grayson Perry CBE RA Hon FRIBA (b. 1960), 'Red Alan Manifesto', digital print, c. 2014, image 29 x 29 cm
Est £40 - £60

130 Sir Grayson Perry CBE RA Hon FRIBA (b. 1960), 'Sissy Liberty' fabric textile, circa 2008, pink and green colour scheme, image 20 x 29 cm
Est £40 - £60

131 Sir Grayson Perry CBE RA Hon FRIBA (b. 1960), 'Sissy Liberty' fabric textile, circa 2008, khaki colour scheme, image 20 x 29 cm
Est £40 - £60

134 After Alvar Aalto (Finnish, 1898-1976), a pair of 'Tank' style armchairs with chromed cantilever arms and tan button upholstery, dated 2011
Est £500 - £700

135 John Brunston (1933-2014), 'Boy and Ox', signed and inscribed, etching and aquatint, image 33 x 22 cm, together with two others by the same artist (3)
Est £100 - £150



132 Sir Grayson Perry CBE RA Hon FRIBA (b. 1960), 'Gentrification' fabric textile, circa 2016, image 14 x 19 cm
Est £30 - £50

133 Luke Pearson & Tom Lloyd for Walter Knoll, a set of five 'Turtle' chairs with white shells and grey leather seats, on four-star bases *SFP
Est £100 - £150



136



136

Pamela Townshend (1920-2019), A child clutching fish in a harbour, signed and dated 1974, mixed media, image 50 x 31 cm

Est £100 - £150

137

Charles Eames (American, 1907-1978) & Ray Eames (American, 1912-1988) for Vitra, a set of four 'Eames Plastic Chair' DSW side chairs with grey shells, labelled and dated 2012 (4)

Est £200 - £250

137



138

A bamboo hat and coat stand together with a pair of glass topped side tables (3)

Est £50 - £80

139

An Orlandini Design 'Nuke' chair in moulded plastic

Est £30 - £40

140

A 1950's Danish beech framed armchair with green button upholstery *SFP

Est £100 - £150

141



141

A Danish Type 1037 'Festival' brass finished ceiling light by Belux

Est £40 - £60

142

A Danish white enamelled ceiling light by Lyskaer

Est £40 - £60



143

A Danish four-tier copper finished ceiling light by Jeka, in the manner of Louis Poulsen

Est £50 - £70

144

A Danish white enamelled ceiling light, Model 754, by Horn

Est £40 - £60

145

A late 20th century smoked perspex ceiling light in the Space Age style

Est £30 - £40

146

A 1970's Danish perspex and copper finished pendant light

Est £30 - £40

147

A 1970/80's Danish ceiling light with a clear perspex rim

Est £30 - £40

148

A 1970's Danish white enamelled Type 732 ceiling light by Horn

Est £30 - £40

149

A Danish ceiling light, the aluminium shade with perspex motifs, with a glass inner shade

Est £30 - £40

150

A 1970's Danish white enamelled pull-down ceiling light

Est £30 - £40

- 151** A William Walker glass bowl decorated with greens and browns on a blue ground raised on a narrow base, di. 14 cm
Est £30 - £40



- 152** A Timothy Harris Isle of Wight glass vase, label to the body, h. 12 cm
Est £40 - £60



- 153** An Isle of Wight 'Wild Garden' Range glass bowl, unsigned, h. 7 cm
Est £30 - £40

- 154** A Peter Layton glass vase, the body decorated with meadow flowers, unsigned, h. 13 cm
Est £80 - £120

- 155** A group of studio glass including a Maltese squat vase, a Maltese open bowl, a contemporary open bowl, a scent bottle etc.
Est £100 - £150



- 156** Yo Thom (Japanese, b. 1973), a stoneware soy sauce pourer and stand, impressed Y mark, h. 9 cm, together with a stoneware/earthenware ladle (3)
Est £60 - £80

- 157** Barry Guppy (1937-2013), a studio pottery bowl decorated with cream drip glazes, unsigned, di. 14 cm, h. 8 cm
Est £40 - £60

- 158** Alan White for Dartington Pottery, a large glazed jug, impressed marks, together with a group of four various Petra Tilly 'Quilt' bowls (5)
Est £40 - £60

- 159** A studio pottery pebble vase with incised LS monogram, together with two studio pottery vases (3)
Est £30 - £50

- 160** Eric William Ravillious (1903-1942) for Wedgwood, a graduated set of three 1950's 'Garden' pattern plates (3)
Est £50 - £80



- 161** Eric William Ravillious (1903-1942) for Wedgwood, an 'Alphabet' pattern bowl, di. 15 cm
Est £80 - £120

- 162** Eric William Ravillious (1903-1942) for Wedgwood, a 'Persephone' coffee pot in the blue colourway together with six green colourway cans and saucers (7)
Est £40 - £60

163 A Wedgwood porcelain plate designed by Edward Bawden for 'The Orient line', no. W 4202, di. 25 cm

Est £50 - £80

164 After Eric William Ravilious (1903–1942), 'Saddler and Harness Maker', taken from the 1938 Curwen Press 'High Street', lithograph, image 22 x 14 cm

Est £150 - £200

165 After Eric William Ravilious (1903–1942), 'Restaurant and Grill Room', taken from the 1938 Curwen Press 'High Street', lithograph, image 22 x 14 cm

Est £150 - £200



166 After Tirzah Garwood (1908-1951), 'The Dog Show', woodcut, circa 1951, printed by Shenval Press, image 16 x 13 cm

Est £250 - £300

167 After Tirzah Garwood (1908-1951), 'The Crocodile', woodcut, circa 1951, printed by Shenval Press, image 16 x 13 cm

Est £250 - £300



168 After Tirzah Garwood (1908-1951), 'Farm Cats', woodcut, printed at The Roundwood Press, 1997 edition of 1,000, image 13 x 17 cm

Est £150 - £200



169 After Tirzah Garwood (1908-1951), 'Cat into Wife', woodcut, printed at The Roundwood Press, 1997 edition of 1,000, image 13 x 17 cm

Est £150 - £200

170 After Tirzah Garwood (1908-1951), a group of loose prints, with the dust wrapper and cover page for 'The Wood Engravings of Tirzah Ravilious', Gordon Fraser

Est £50 - £80

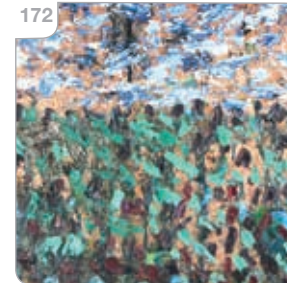
171 A group of loose prints, woodblocks and design books including Eric Ravilious, Eric Gill, Claire Leighton, Edward Bawdon, Tirzah Gardwood etc. with the cover and title page of 'High Street' (Qty)

Est £150 - £200



172 David Chambers (contemporary) An abstract landscape, signed to the frame, oil on board, total 53 x 73 cm

Est £40 - £60



173 A 1970's Danish smoked glass ceiling light with moulded glass inner shade

Est £30 - £40

174 A 1970's Danish spun aluminium ceiling light with perspex motifs

Est £30 - £40



- 175** A 1970's white enamelled two-tier ceiling light of open form
Est £30 - £40

- 176** Arne Vodder (Danish, 1926-2009) for France & Son, a Model FD-164 teak adjustable armchair with loose brown cushions, stamped FF mark to the frame *SFP
Est £600 - £1000

- 177** Arne Vodder (Danish, 1926-2009) for France & Son, a Model FD-164 teak adjustable armchair with loose brown cushions, stamped FF mark to the frame *SFP
Est £600 - £1000

- 178** A pair of G-Plan 'Sixty Two' button-upholstered wingback armchairs on walnut four-star swivel bases, together with a three-seater sofa (3) *SFP
Est £400 - £600



- 181** Gerard Van Den Berg (b. 1947) for Montis, a 'Loge' black leather lounge with matching ottoman
Est £300 - £400

- 182** Patricia Urquiola (Spanish, b. 1961) for Kartell, a set of seven 'Frilly' stacking chairs in pink moulded plastic
Est £250 - £300

- 179** A Guy Rogers of Liverpool 'Santa Fe' suite including a three-seater sofa and pair of armchairs each upholstered in tan button leather (3) *SFP
Est £400 - £600

- 180** Arne Hovmand-Olsen (Danish, 1918-1989), a set of four 1960's teak dining chairs with seagrass seats
Est £200 - £300



- 183** Diesel Designers for Moroso, a 'Longwave' armchair upholstered in purple velvet, on black tapering legs
Est £250 - £300



- 184** Patrick Jouin (French, b. 1967) for Kartell, an 'Optic' cube in purple, 40 x 40 x 40 cm
Est £40 - £60

- 185** Charles Eames (American, 1907-1978) & Ray Eames (American, 1912-1988) for Vitra, an 'Aluminium Group' desk chair with black hopsack seat on a chromed frame with a four-star swivel base, labelled *SFP
Est £100 - £200



- 186** A 1970/80's simulated rosewood and metalwork hat and coat stand with seven hooks, w. 84 cm
Est £50 - £70



- 187** A 1970's black polycarbonate table of mushroom form with a circular glass inset top, di. 53 cm, h. 51 cm
Est £50 - £80



- 188** Antonio Citterio (Italian, b. 1950) for B&B Italia, a 'luta' chair with an upholstered seat, mesh frame and four-star swivel base, labelled and dated 2007 *SFP
Est £100 - £150

- 189** A Dorothy Thorpe lucite spiral spring umbrella stand, h. 60 cm
Est £60 - £100

- 190** Gianfranco Frattini (Italian, 1926-2014) for Artemide, a pair of 'Megaron' uplighters in a brushed grey finish, h. 180 cm
Est £400 - £600

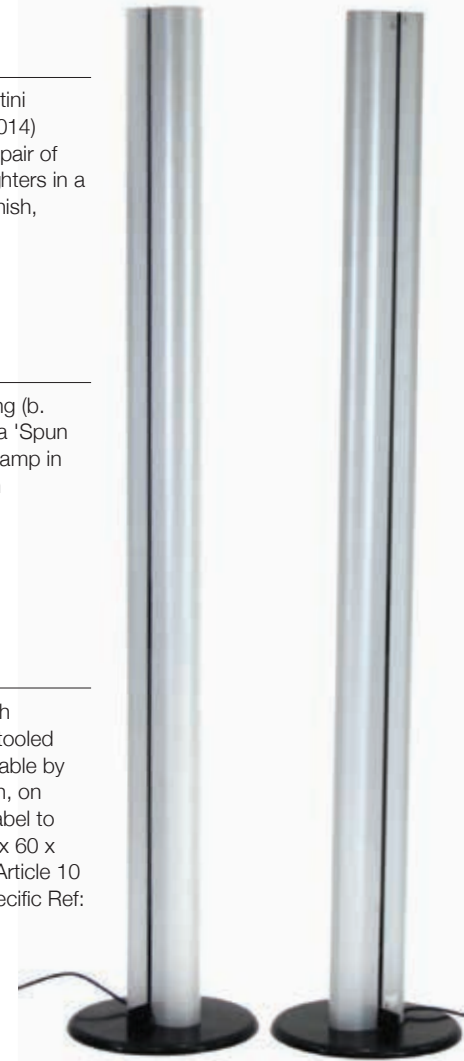


- 191** Sebastian Wrong (b. 1973) for Flos, a 'Spun Floor Light' in black, h. 176 cm
Est £200 - £300



- 192** Sebastian Wrong (b. 1973) for Flos, a 'Spun Light T2' table lamp in black, h. 72 cm
Est £100 - £200

- 193** A 1960's Danish rosewood and tooled leather writing table by Soren Willadsen, on tapering legs, label to the frame, 120 x 60 x 66 cm *CITES Article 10 Transaction Specific Ref:
Est £200 - £300





- 198** Attributed to Moe Bridges (American), a Brutalist two-tier chandelier, the hammered brass body with fifteen branches, di. 70 cm
Est £150 - £200



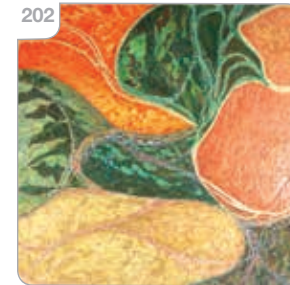
- 201** Simon Palmer (b. 1965), 'The Signalman and the Guard', signed and numbered AP 15/15, colour print, image 47 x 53 cm
Est £150 - £200

- 194** A Norwegian reclining armchair with green leather button upholstery on a swivel base, together with a matching stool by Jens Eknæs *SFP
Est £200 - £300

- 196** A group of five assorted Danish ceiling lights together with a pair of 1970's moulded glass wall lights (Qty)
Est £80 - £120

- 195** A 1960's Swedish modular 'String' system including a teak fall-front cabinet, a four-drawer chest, a glazed sliding door cabinet, three assorted shelves and three 'waterfall' uprights
Est £400 - £500

- 197** A figural group in the style of Henry Moore together with a similar group and two studio pottery pieces (4)
Est £40 - £60



- 203** John Brunsdon (1933-2014), 'Vale of Edale', signed and numbered 27/350, etching and aquatint, image 45 x 60 cm
Est £120 - £150

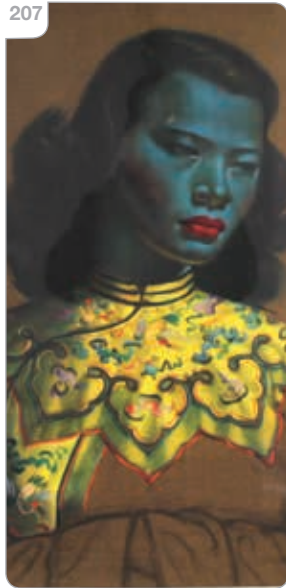
- 205** John Brunsdon (1933-2014), 'Gower Seascape', signed and numbered 96/150, etching and aquatint, image 46 x 59 cm
Est £80 - £120

- 202** Keith Barrell (b. 1939), acrylic media on gesso ground, signed verso and dated 2011, image 100 x 100 cm
Est £100 - £150

- 204** John Brunsdon (1933-2014), 'Rydal', signed and numbered artist's proof 5/8, etching and aquatint, image 45 x 61 cm
Est £150 - £200

- 206** Ivor Abrahams R.A. (1935-2015), a bronze figure modelled as an abstract bather, signed and dated 1982, numbered 1/1, on a teak plinth, h. 55 cm, w. 28 cm (not including plinth) *Gifted to the vendor by the sculptor.
Est £600 - £800

207



207 After Vladimir Tretchikoff (South African, 1913-2006), 'Chinese Girl', coloured reproduction, image 59 x 48 cm

Est £50 - £80

208

Giuliana Gramigna (Italian, 1929-2016) for Artemide, an 'Electra' table lamp, labelled to the switch

Est £300 - £500

209

A Mallof two-tier desk tidy with teak laminate trays

Est £80 - £120

210

A Danish teak sculptural bowl, stamped 'Denmark', di. 23 cm, h. 15.5 cm

Est £40 - £60

211

A 'Kuta' table lamp designed by Vico Magistretti (Italian, 1920-2006), h. 60 cm

Est £200 - £300

211



212

A Danish brown enamelled and brass highlighted wall light by Fog & Morup

Est £60 - £80

212



213

Richard Sapper (German, 1932-2015) for Artemide, a 'Tizio' adjustable desk lamp

Est £80 - £120

214

A 1950's Smiths oak wall clock, the square body with Arabic numerals, 34 x 30 cm

Est £20 - £30

215

Gianfranco Frattini (Italian, 1926-2014) for Artemide, a pair of 'Megaron Parete' wall lights in black, labelled

Est £100 - £150

216

Victoria Topping (contemporary), 'Viriditas', limited edition poster, initialled and numbered 2/25, image 85 x 85 cm

Est £30 - £50

217

After David Hockney (b. 1937), 'Pearblossom HWY (2nd Version) Photographic Collage', poster, 82 x 93 cm

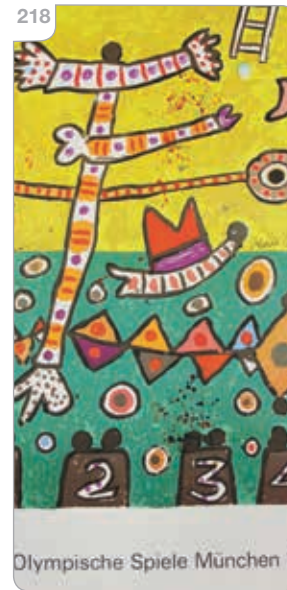
Est £80 - £120

218

After Alan Davie (1920-2014), 1972 Munich Olympic Games (Olympische Spiele Munchen), Edition Olympia 1972 GMBH 1972, printed in Germany, 101 x 64 cm

Est £100 - £150

218



219



219

After Marino Marini (1901-1980), 1972 Munich Olympic Games (Olympische Spiele Munchen), Edition Olympia 1972 GMBH 1972, printed in Germany, 101 x 64 cm

Est £100 - £150

220

After Otmar Alt (b. 1940), 1972 Munich Olympic Games (Olympische Spiele Munchen), Edition Olympia 1972 GMBH 1972, printed in Germany, 101 x 64 cm

Est £100 - £150

221



221

Allan Forsyth (contemporary photographic artist), 'Flow to You', signed and numbered 1/25, 108 x 180 cm

Est £150 - £200

222

Allan Forsyth (contemporary photographic artist), 'Ghost Flower 5', signed and numbered 6/25, 108 x 180 cm

Est £150 - £200

223



223

Allan Forsyth (contemporary photographic artist), 'Ghost Flower 4', signed and numbered 2/25, 108 x 180 cm

Est £150 - £200

224

Robin Day (1915-2010), a pair of 1960's 'Club' armchairs upholstered in white/cream button vinyl on stainless steel legs, Hille badge to one frame *SFP

Est £400 - £600

225

Robin Day (1915-2010), a 1960's 'Club' three-seater sofa upholstered in white/cream button vinyl on stainless steel legs *SFP

Est £400 - £600

225



226

Attributed to Vico Magistretti (Italian, 1920-2006), a white laminate dining table on stained red beech legs together with a set of four matching chairs (5)

Est £300 - £500

227

After Eero Saarinen (Finnish-American, 1910-1961), a circular laminate dining table on a 'tulip' style base, di. 120 cm

Est £300 - £500

228

A pair of contemporary purple swivel tub chairs by Johanson Design *SFP

Est £60 - £80

229

A 1960's Swedish teak sculptural 'Condor' coffee table by Fredrik Schriever-Abeln, with a later rectangular glass surface, 160 x 84 cm

Est £300 - £400

230

A pair of 1930's machinist or factory chairs by Ama-Elastik, the beech seats on adjustable supports and four splayed legs

Est £200 - £300

230



231

A near pair of 1950's and later chairs, the beech bentwood seats on adjustable supports and four stainless legs

Est £60 - £80





Mid-Century Design Soft Furnishings Policy

The Furniture and Furnishings (Fire) (Safety) Regulations 1988 (as amended in 1989 and 1993) state that all soft furnishings holding foam must conform to BS 5852 standards. This means that any post-1988 furniture will need to bear a fire label for auction purposes.

The following exceptions apply:

- Items constructed pre-1950. [Regulation 4(a)]
- Items being sold to someone who is in the business of reupholstering furniture. [See Regulation 4(b) and Consumer Protection Act 1987, s.46(7)]
- Items being sold to someone who is in the business of dealing in furniture. [Regulation 14(1)]
- Items being sold that will not be used in a domestic setting in the UK; e.g. for export, for use in a museum or theatre, as a work of art. [Regulation 3(1a) and 4(c)]

The Mid-Century period has been recognised as an area of increased interest to collectors for many years now. The relevant soft furnishings in our sales have been carefully selected to be collector's pieces which are purchased for their design qualities.

Soft furnishings in this sale are being sold as collector's items and are NOT intended for private use in the UK. They may not be in compliance with the Furniture & Furnishings (Fire) (Safety) Regulations 1988 and should be re-upholstered to conform to BS 5852 prior to any use in a domestic dwelling.

Bids are only accepted on the agreement that the furnishings will not be used in a domestic dwelling in the UK.

This policy is in-line with all major UK auctioneers and the Mid-Century trade.

- 232** A Pfaff machinist's desk-mounted adjustable lamp enamelled in grey, together with another similar lamp in black (2)

Est £30 - £50

- 233** Attributed to Zuri Furniture, a 'Pebble' chair upholstered in bright floral fabric on a chromed four-star swivel base *SFP

Est £150 - £200

- 234** A 1950's teak or walnut dressing table mirror, the adjustable bevelled plate over a single drawer and two dummy drawers, on bracket feet, w. 74 cm, h. 72 cm

Est £60 - £80

- 235** A 1930-50's oak and strung circular occasional table on square tapering legs joined by stretchers, di. 105 cm

Est £80 - £120

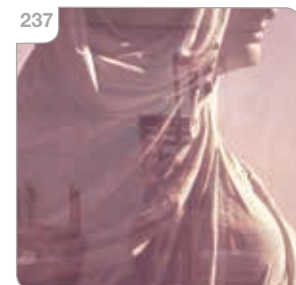


- 236** A 1950's oak seat or bench, the back cushion held in place by rope supports, over two drop-in seats, together with a matching armchair, corner chair and stool, and a similar teak armchair (5) *SFP

Est £250 - £300

- 238** Charles Rennie Mackintosh (Scottish, 1868-1928), an Italian 'Ingram' chair manufactured by Cassina for their Masters Collection, labelled

Est £200 - £300



- 237** Ruffin Cooper (American, 1942-1992), Statue of Liberty, signed and dated 1979, limited edition print, image 83 x 121 cm

Est £80 - £120

- 239** A 1960's Danish teak and oak elbow chair by Soro Stolefabrik *SFP
Est £100 - £150



- 240** Robert Heal for Staples of Cricklewood, a teak modular 'Ladderax' shelving system including a single-drawer shelf, w.90 cm, a cabinet containing a Tellux stereo system, two metal uprights, h. 200 cm, and the associated cross-members
Est £200 - £300

- 241** A set of five Scandinavian pine dining chairs on square slab legs (5)
Est £120 - £150

- 242** A 1960's and later teak chest of three long drawers on circular tapering legs, 75 x 38 x 65 cm
Est £80 - £120

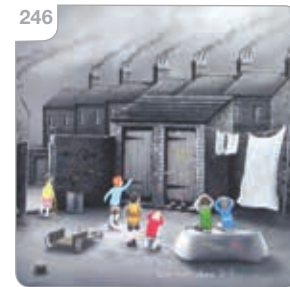


- 243** Attributed to Ib Kofod Larsen (Danish, 1921-2003), a 1960/70's black armchair on a four-star swivel base *SFP
Est £200 - £300



- 244** A set of six Danish oak ladder-back dining chairs in the manner of by Henning Kjaernulf *SFP
Est £200 - £300

- 245** Leigh Lambert (b. 1979), 'Loitering with Intent', signed and numbered AP 8/10, image 31 x 23 cm, framed together with 'Into Action' and 'They Went That Way'
Est £80 - £120



- 246** Leigh Lambert (b. 1979), 'Now he's done it!', signed and numbered 4/75, image 37 x 48 cm
Est £50 - £80



- 247** Leigh Lambert (b. 1979), 'Stop that van!', signed and numbered AP 9, image 26 x 37 cm
Est £50 - £70

- 248** Leigh Lambert (b. 1979), 'Last one there buys the sweets', signed and numbered AP 9/10, image 40 x 40 cm
Est £80 - £120



- 249** Leigh Lambert (b. 1979), 'The Market Tavern', signed and numbered AP1, image 35 x 48 cm
Est £80 - £120



250



250 Leigh Lambert (b. 1979), 'Don't worry kids he's one of ours', signed and numbered 14/35, image 17 x 24 cm, framed together with 'Is he friend or foe grandad'

Est £50 - £70

251

Leigh Lambert (b. 1979), 'Here at Last', signed and numbered 23/495, image 17 x 25 cm, together with 'Grandad's Old Cap', both with certification, and 'Those Were The Days' limited edition book in slip case (3)

Est £100 - £150

252

A Merrow Associates 'Preece' dining table, the circular glass surface on a chromed frame, di. 132 cm, together with six matching dining chairs *SFP

Est £200 - £300

253

A 1970's marble coffee table, the oval surface resting on an associated brass tubular base, 130 x 56 x 42 cm

Est £60 - £80

Retro Video Games & Consoles

TO BE SOLD BY LIVE AUCTION

Saturday 28th February 2026

Commencing at 10am

We are now inviting entries for this forthcoming specialist sale. If you own anything which you think might be suitable we are happy to give complimentary auction advice.

Please contact auctioneer Harry Shiner on 01234 266 366 or retro@peacockauction.co.uk

SALE ENTRIES NOW INVITED

Bedford Auction Centre

Eastcotts Park, Wallis Way, Bedford, MK42 0PE
01234 266 366 or info@peacockauction.co.uk

peacockauction.co.uk

SITTING ON LIQUID ASSETS?

If you've got bottles of wine or spirits sitting in the cupboard, cellar, or under the stairs that you're never going to drink, it might be worth more than you think. Maybe you inherited a collection, received gifts over the years, or bought cases that have been gathering dust. We'll give you a free valuation and let you know what it might fetch at auction.

The Perfect Time to Decant Your Collection

We can help you sell:

- Wine collections large or small
- Single bottles or mixed cases
- Whisky, brandy, and spirits
- Vintage ports and sherries
- Champagne and sparkling wines

The market for quality wine and spirits remains strong, with collectors and connoisseurs actively seeking rare vintages, single malts, aged cognacs, and premium champagnes. Whether you have a single exceptional bottle or an entire collection, our specialist can help you achieve the best possible return.

Looking to Sell?

Contact the auctioneer
Chris Armstrong
01234 266 366
wine@peacockauction.co.uk
www.peacockauction.co.uk

Our auctions of vintage and modern wines & spirits attract interest from around the world. We have seen demand and consequently prices at auction rise from both collectors and connoisseurs.

We invite entries of vintage and classic wines and spirits and are happy to give free sales value advice. We can accept entries at any of our auction centres.

2026 AUCTION DATES

Friday 13th February 10.30am

Friday 10th April 10.30am

Friday 12th June 10.30am

Friday 14th August 10.30am

Friday 9th October 10.30am

Friday 11th December 10.30am

ENTRIES NOW INVITED



Jewellery, Coins & Watches

TO BE SOLD BY LIVE AUCTION

Friday 6th March 2026

Commencing at 2pm

Jewellery auctions have become one of the highlights of the sales calendar and include a range of antique & modern watches, rings, sovereigns, bracelets, brooches, pendants and necklaces, etc

Please contact auctioneer Lindsay Taylor on 01234 266 366, Whatsapp on 07802 473546 or jewellery@peacockauction.co.uk

SALE ENTRIES NOW INVITED

Bedford Auction Centre
Eastcotts Park, Wallis Way, Bedford, MK42 0PE
01234 266 366 or info@peacockauction.co.uk

peacockauction.co.uk



Hammer Prices - Bedford, November 2025 Sale

1	£70	50	£70	92	£550	142	£45	183	£40	234	£120	275	£90	317	£120
2	£360	51	£85	93	£40	143	£90	186	£320	235	£260	276	£10	318	£40
3	£360	52	£170	94	£750	144	£45	188	£30	236	£240	278	£95	319	£90
5	£140	53	£160	95	£190	145	£90	190	£100	237	£300	279	£420	320	£45
6	£90	54	£120	96	£240	146	£60	191	£100	238	£50	280	£85	321	£28
8	£400	56	£95	97	£200	147	£650	192	£160	239	£100	281	£65	322	£750
9	£40	57	£95	99	£260	148	£50	193	£150	241	£280	282	£30	323	£220
10	£260	58	£20	100	£220	149	£600	194	£100	242	£140	284	£190	324	£26
11	£70	59	£320	104	£100	150	£400	197	£35	243	£340	285	£300	325	£35
12	£85	60	£55	106	£40	151	£95	198	£30	244	£140	287	£460	326	£260
13	£40	62	£22	109	£22	152	£50	199	£200	245	£550	291	£420	327	£50
15	£90	63	£16	110	£280	153	£50	201	£80	246	£120	292	£180	328	£55
16	£25	64	£30	112	£35	154	£80	204	£30	247	£80	293	£140	329	£130
18	£65	65	£22	113	£26	155	£100	205	£60	248	£100	294	£200	330	£30
20	£85	66	£60	114	£50	156	£110	207	£420	250	£260	295	£55	331	£35
21	£850	67	£35	115	£55	157	£70	208	£40	251	£65	296	£24	333	£45
22	£420	68	£175	117	£85	158	£320	209	£110	252	£65	297	£65	334	£80
23	£1400	68	£30	118	£60	159	£35	210	£9500	253	£50	298	£90	335	£50
24	£1400	69	£130	119	£55	160	£1500	211	£90	254	£20	299	£60	338	£950
26	£180	69	£10	120	£85	161	£40	212	£40	255	£240	300	£190	340	£1200
27	£380	70	£150	121	£35	162	£480	213	£55	256	£80	301	£35	341	£180
28	£300	73	£260	124	£55	163	£550	214	£140	257	£110	302	£24	342	£170
29	£300	73	£22	125	£20	164	£700	215	£110	258	£90	303	£55	344	£75
31	£50	74	£20	126	£16	165	£380	216	£40	260	£14	304	£40	345	£140
32	£30	74	£16	129	£60	166	£200	217	£65	261	£45	305	£120	346	£22
33	£120	75	£35	130	£50	168	£120	218	£70	262	£28	306	£170	347	£40
34	£140	75	£110	132	£50	170	£30	219	£35	263	£40	307	£40	348	£60
35	£40	76	£65	133	£190	171	£160	222	£100	264	£20	308	£30	349	£20
41	£480	77	£20	134	£150	172	£150	223	£26	265	£35	309	£280	350	£26
42	£260	78	£35	135	£80	173	£240	224	£90	266	£20	310	£650	351	£65
43	£60	80	£70	136	£65	174	£320	226	£45	268	£45	311	£80	356	£70
44	£80	82	£200	137	£110	175	£300	228	£100	269	£30	312	£170	357	£70
45	£460	87	£30	138	£10	176	£60	230	£40	270	£24	313	£550	359	£85
47	£50	88	£35	139	£65	178	£55	231	£100	272	£35	314	£110	361	£120
48	£50	90	£150	140	£65	179	£75	232	£75	273	£30	315	£95	362	£60
49	£60	91	£22	141	£600	182	£40	233	£85	274	£55	316	£65	365	£50

366	£45	412	£60	458	£45	504	£30
367	£20	413	£50	459	£60	508	£400
368	£35	414	£50	460	£110	509	£170
370	£80	415	£50	462	£40	510	£95
372	£22	417	£380	463	£45	511	£190
373	£26	418	£360	464	£60	512	£120
374	£20	419	£70	466	£160	513	£400
375	£50	420	£30	467	£260	515	£30
376	£100	423	£30	469	£500	516	£180
377	£10	424	£30	471	£600	517	£400
378	£95	425	£100	472	£600	519	£320
380	£24	426	£40	473	£85	520	£320
381	£55	427	£55	475	£150	521	£600
382	£16	429	£22	476	£35	522	£130
383	£190	433	£30	477	£50	523	£70
384	£95	434	£40	478	£26		
385	£75	435	£30	480	£80		
386	£65	436	£28	481	£55		
387	£180	437	£150	482	£45		
388	£70	438	£20	483	£85		
389	£50	439	£50	484	£120		
390	£75	440	£150	485	£55		
391	£55	442	£950	488	£40		
392	£30	444	£160	489	£55		
394	£90	445	£80	491	£20		
395	£80	446	£40	492	£85		
396	£55	447	£75	493	£55		
397	£35	448	£300	494	£50		
399	£65	449	£80	495	£40		
400	£30	450	£35	496	£750		
401	£100	452	£150	497	£550		
402	£35	453	£190	498	£40		
403	£50	454	£75	499	£20		
404	£24	455	£220	500	£160		
406	£40	456	£65	501	£400		
408	£30	457	£55	503	£90		

Next Sale

Bedford Auction Centre
Friday 15th May 2026
Commencing at 10am

Visit our website for full details
www.peacockauction.co.uk

Mid Century Design

TO BE SOLD BY LIVE AUCTION

Friday 15th May 2026

Commencing at 10am

Mid Century classic designed furniture and collectables have proved to be very popular with buyers looking for something out of the ordinary to furnish their homes. Our contemporary sales are jam-packed with British, Scandinavian and American designs by 'outside of the box' thinkers of the 1950s through to present day.

Please contact auctioneer Matthew Baker on 01234 266 366, Whatsapp on 07802 473546 or design@peacockauction.co.uk

SALE ENTRIES NOW INVITED

Bedford Auction Centre

Eastcotts Park, Wallis Way, Bedford, MK42 0PE
01234 266 366 or info@peacockauction.co.uk

peacockauction.co.uk